

THE
HAVEN

LUXURY...UNSURPASSED

A DEVELOPMENT BY



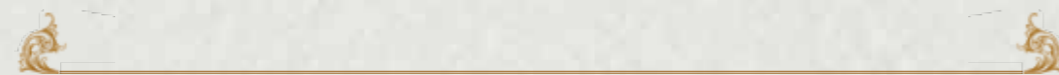
ELEGANT
PROPERTIES



SANDALWOOD

E-mail: thehaven@loresho.com; info@elegantproperties.co.ke | Tel.: 0731 286286, 0700 004449





ROYAL LIVING
FOR THE SELECT FEW





Elegant Properties and Sandalwood Developers present **THE HAVEN**, an exclusive, high-end, gated community of 28 stunning homes in Loresho.

With quiet surroundings & a countryside setting, **THE HAVEN** exemplifies estate lifestyle at its very finest.

Each home has an exceptional layout. Effective planning and use of space are key components factored into the design of these elegant homes, allowing for comfortable and luxurious family living.

The unique landscaping around and between the homes adds to the picturesque setting and creates a strong sense of privacy.

THE HAVEN's implementation focuses on superior infrastructure, provision of outstanding amenities and environmental consciousness. Additionally, an EDGE certification emphasises the intellectual ethos.



A SYMPHONY OF NATURE & LIFESTYLE



ESTATE LIFESTYLE





DISTINCTIVE DESIGN



PRIVATE LAWNS & GARDENS

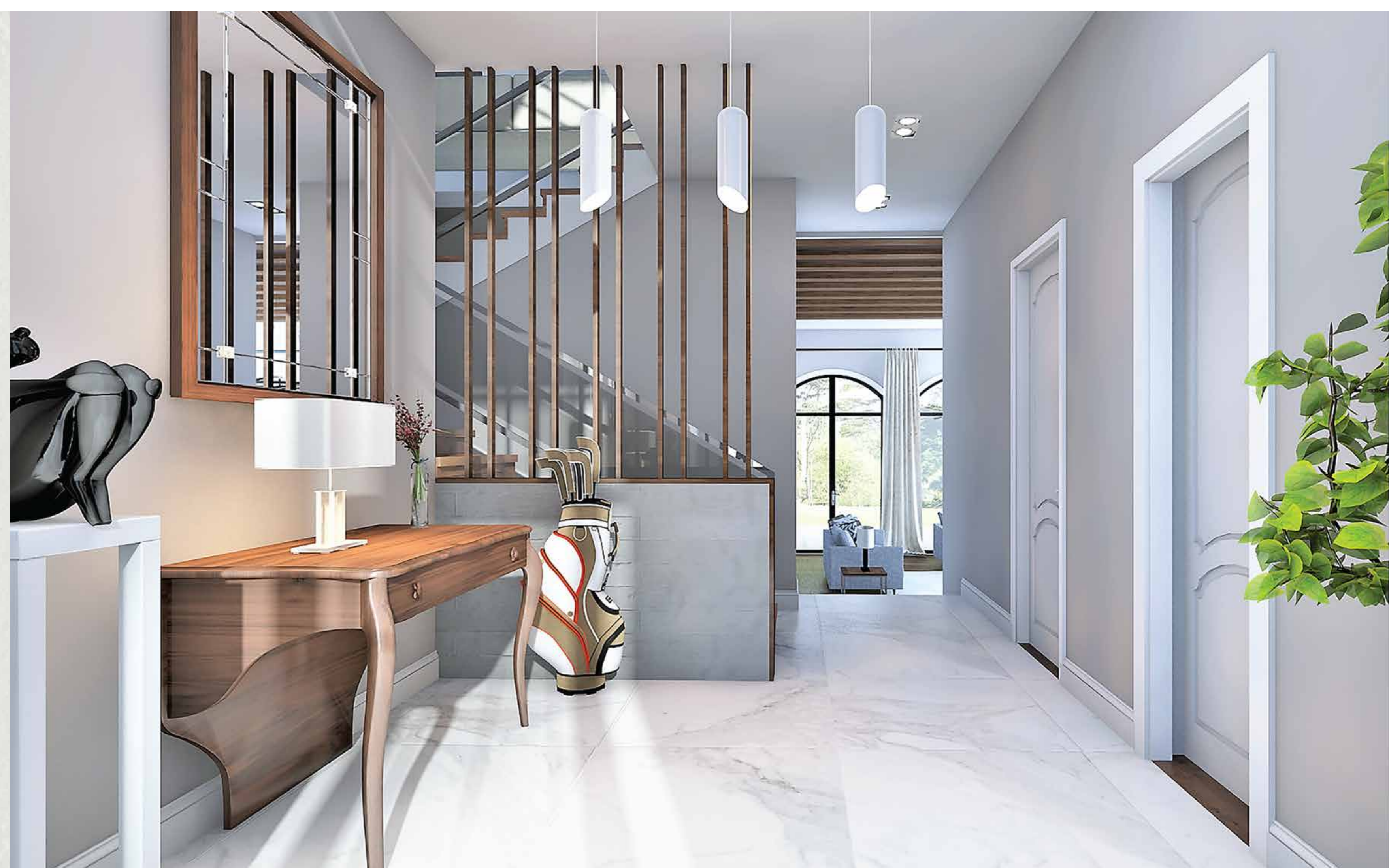




WARM & WELCOMING



STEP INTO A STUNNING
WORLD OF YOUR OWN





LIGHT & AIRY



ELEGANT SPACES





CRAFTED FOR
CHARM & FUNCTIONALITY



REFRESH & REJUVENATE

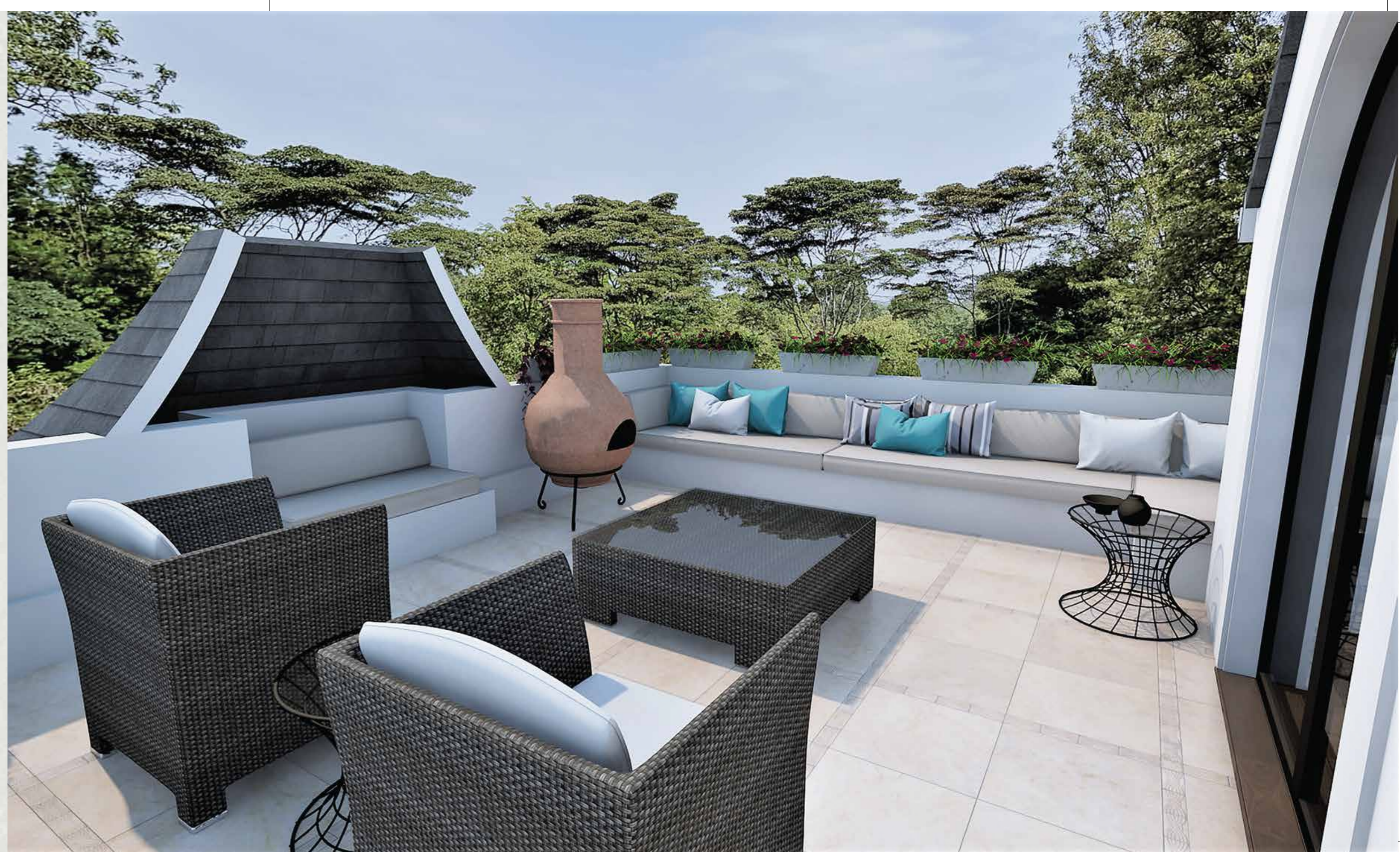




HIS & HERS



ROOFTOP REVELRY



HOME FEATURES

- Double height grand entrance lobby with skylight.
- Spacious living areas with high ceilings and large openings onto a covered terrace with attached pergola for outdoor entertainment.
- Large living room with a fireplace.
- Large multi-purpose entertainment room that can be configured as an extraordinary master suite opening out onto a rooftop terrace and balcony.
- Wooden floors in living areas & bedrooms.
- 4-5 large en suite bedrooms with generous built-in wardrobes with sliding doors.
- Spacious walk-in closet attached to master bedroom.
- European designer sanitaryware and tapware.
- Customised upscale European kitchen with built-in appliances and pantry.
- External laundry and kitchenette area attached to the main kitchen.
- Independent SQ for two.
- Configured for advanced, personalised home automation & security system.



GROUND FLOOR




FIRST FLOOR



SECOND FLOOR


SAFETY & SECURITY

Spectacular canopied entrance with a distinct security buffer zone for visitors.
State-of-the-art security systems, CCTV & access control.
Vibration sensors on boundary walls.
Pressurised fire suppression system with hydrants throughout the estate



ESTATE FEATURES

Driveways, jogging track & children's cycling track.
Indigenous mature trees retained on site.
Full generator backup facility for the entire community.
Internet ready, fibre optic backbone to each home.
On-site borehole with water reticulation plant.
On-site water recycling plant & garden irrigation.
High-end solar hot water system for each home.





WEEKENDS AT THE CLUB



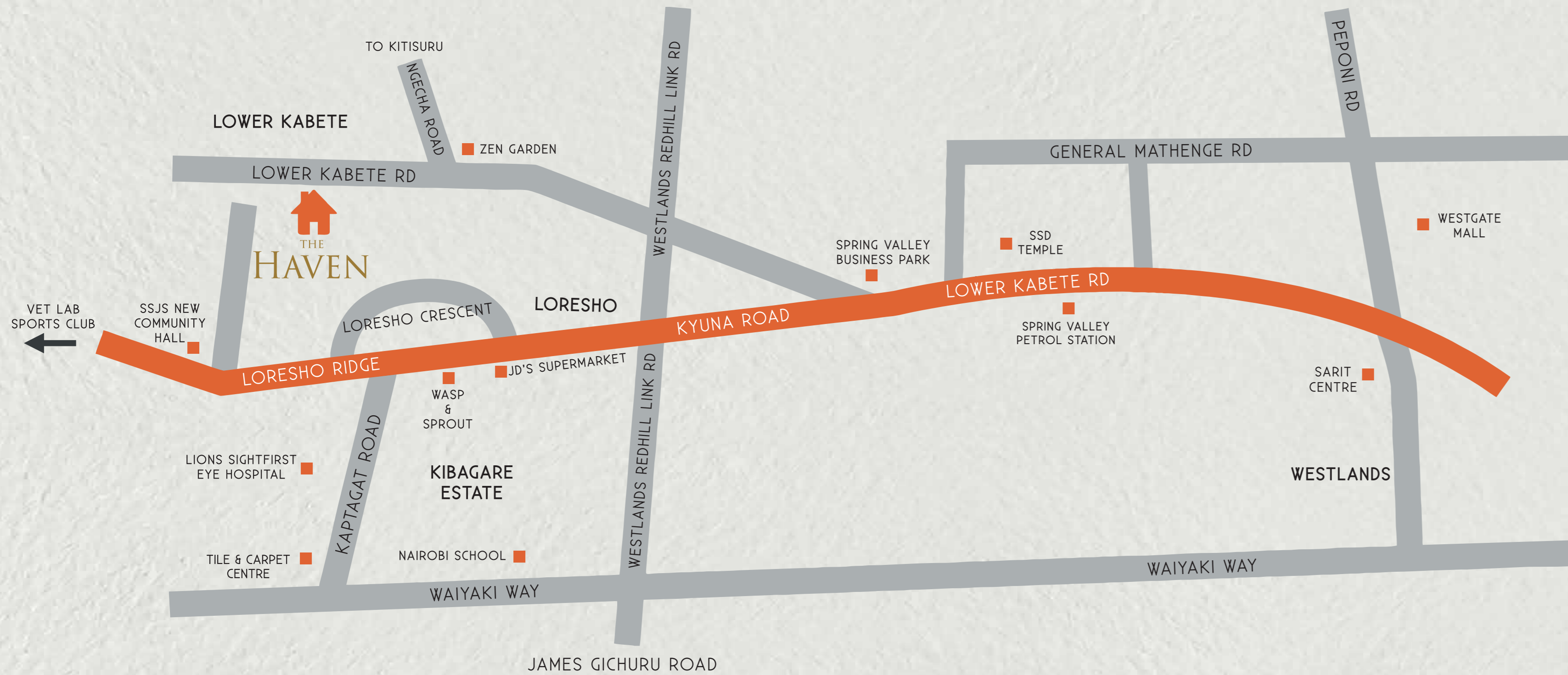
CLUBHOUSE FEATURES

- Heated pool with sun loungers
- Baby pool
- Fully equipped gym
- Steam room
- Restaurant with kitchen
- Individual family cabanas surrounding the pool deck
- Sports bar with large viewing deck
- Sprawling manicured lawn with children play area



ESTATE LAYOUT





LOCATION

