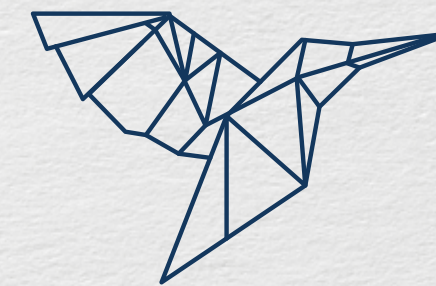


URBAN LUXURY MEETS SERENE TRANQUILITY



DONYO HILL



Artist Impression



DONYO HILL

GRANDEUR AT EVERY GLANCE

Introducing Donyo Hill, a majestic residential oasis located in the most desirable corner of Donyo Sabuk Avenue and Peponi Road, Westlands. This prestigious development redefines luxury living with its meticulously designed 2, 3 & 4 bedroom high-end apartments, showcasing unique architecture and unparalleled amenities.

Discover a home that exude a unique charm, bright and airy interiors, spacious balconies, and spectacular views that elevate your living experience. Each residence is a haven of comfort and sophistication, carefully designed to showcase the perfect blend of natural light, space, and visual grandeur.

Unwind in style on the panoramic rooftop terrace, boasting breathtaking views of the lush Karura Forest. Experience the epitome of sophistication and serenity at Donyo Hill, where luxury meets nature's splendour.



BASK IN THE BEAUTY
OF SOPHISTICATION

Artist Impression



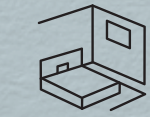
EXPERIENCE THE ART OF ARRIVAL

As you step into the stunning grand entrance lobby you'll be greeted by a world of luxury and sophistication. This magnificent space sets the tone for the unparalleled lifestyle that awaits you.





ENHANCE THE AESTHETIC APPEAL



Lavish bedrooms featuring large closet spaces & bathrooms



Very large balconies



Large floor to ceiling heights & large windows



Designer Italian kitchens with In-built appliances



Premium German sanitary fittings



Grand entrance lobby with around the clock security



Adequate & dedicated parking with ample visitor car parking



3 panoramic passenger elevators, 1 service elevator



Automatic generator back up for all areas



Borehole on site



Café



CCTV & electric fence



Video intercom



Internet & fiber optic backbone



Dhobi area with separate entrance



Artist Impression

ENDLESS VIEWS, BREATHTAKING AURA

Expansive balconies stretch out like verdant vistas, framing panoramic views of Karura Forest. Imagine sipping your morning coffee or enjoying a glass of wine in the evening, surrounded by the lush canopy of Nairobi's most beloved natural treasures.



GATHER, RELAX,
AND MAKE MEMORIES



Step into the bright and airy living room, where soaring floor-to-ceiling heights and expansive windows create a sense of grandeur and freedom. The spacious dining area, flooded with natural light, provides the perfect setting for hosting dinner parties or sharing meals with loved ones.

Artist Impression

Artist Impression



Artist Impression

SLUMBER IN STYLE,
WAKE UP REFRESHED



Artist Impression

Retreat to your sanctuary, designed to envelop you in comfort and privacy. Spacious closets provide ample storage for your wardrobe, while the elegant bathrooms offer a tranquil oasis to unwind. With attention to detail, these bedrooms are the epitome of relaxation and pampering.





COOK, SERVE & SAVOUR THE FLAVOUR

Experience the art of culinary delight in the designer European kitchens, where style and functionality blend seamlessly. Equipped with sleek, in-built appliances and premium finishes, these kitchens are designed to inspire your inner chef.



Individually designed layouts made in Italy



Quartz stone work surfaces



Full height splashback



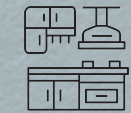
Specialised studio ceiling lighting



Integrated Appliances including Ceramic Hob, Gas Hob, Extractor, Multifunctional Oven, & Microwave



Built-in multi-function dishwasher

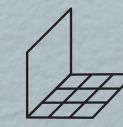


Spacious pantry attached to the kitchen



LUXURIATE IN THE ART OF SELF-CARE

Indulge in the luxury where premium European sanitary fittings and sleek designs create a spa-like experience. Every detail, from the unique fixtures to the plush finishes, has been carefully curated to pamper yourself in style.



Spanish porcelain wall and floor tiles



Low-level vanity unit for storage



High-level fixed mirror with concealed LED lighting



Recessed LED downlights



Frameless toughened glass shower screen

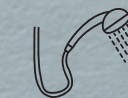
German designer sanitaryware and tapware:



Basin with basin mixer

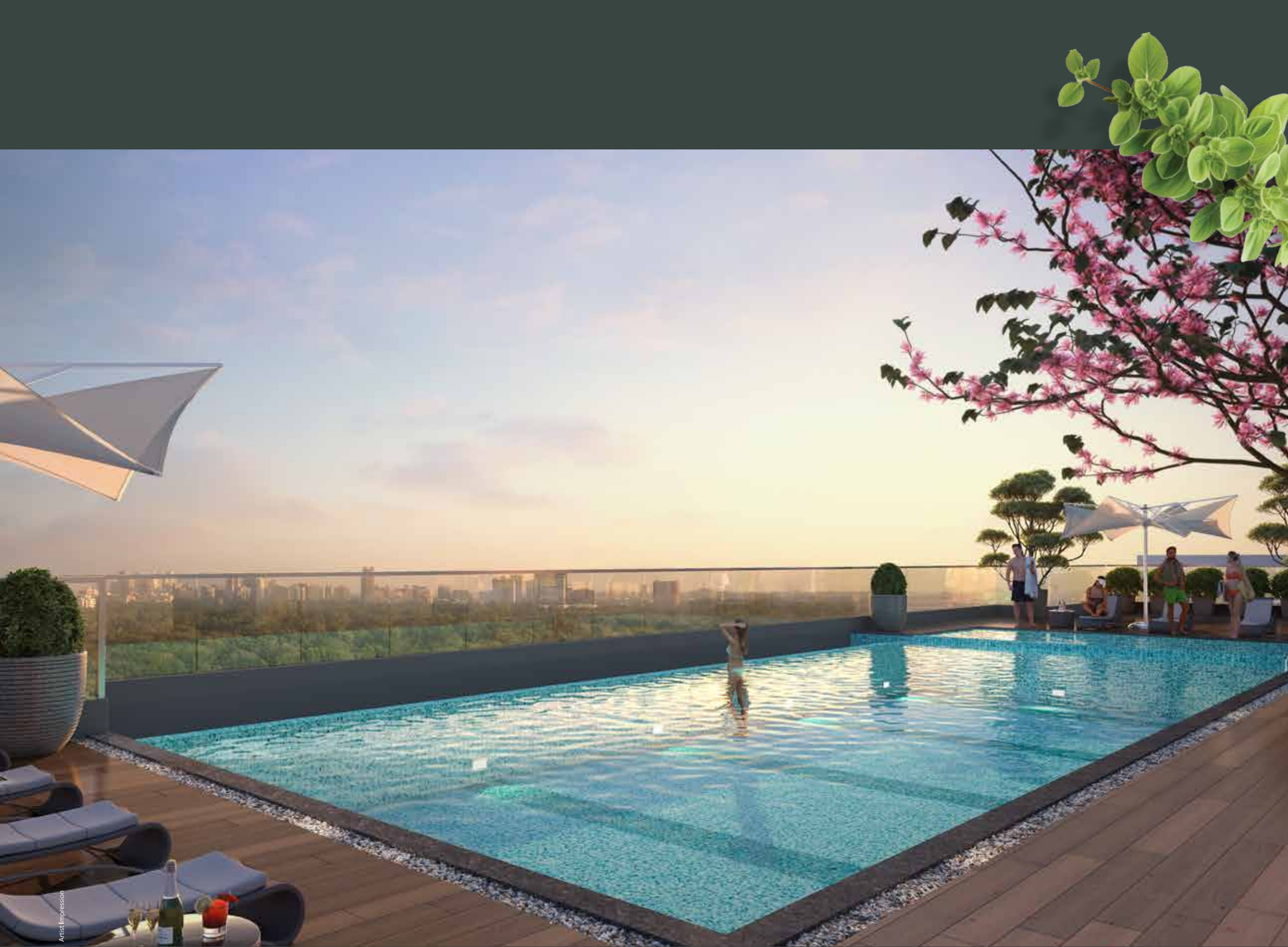


WC pan, soft-close seat, concealed cistern and dual flush



Rain shower head with separate hand shower



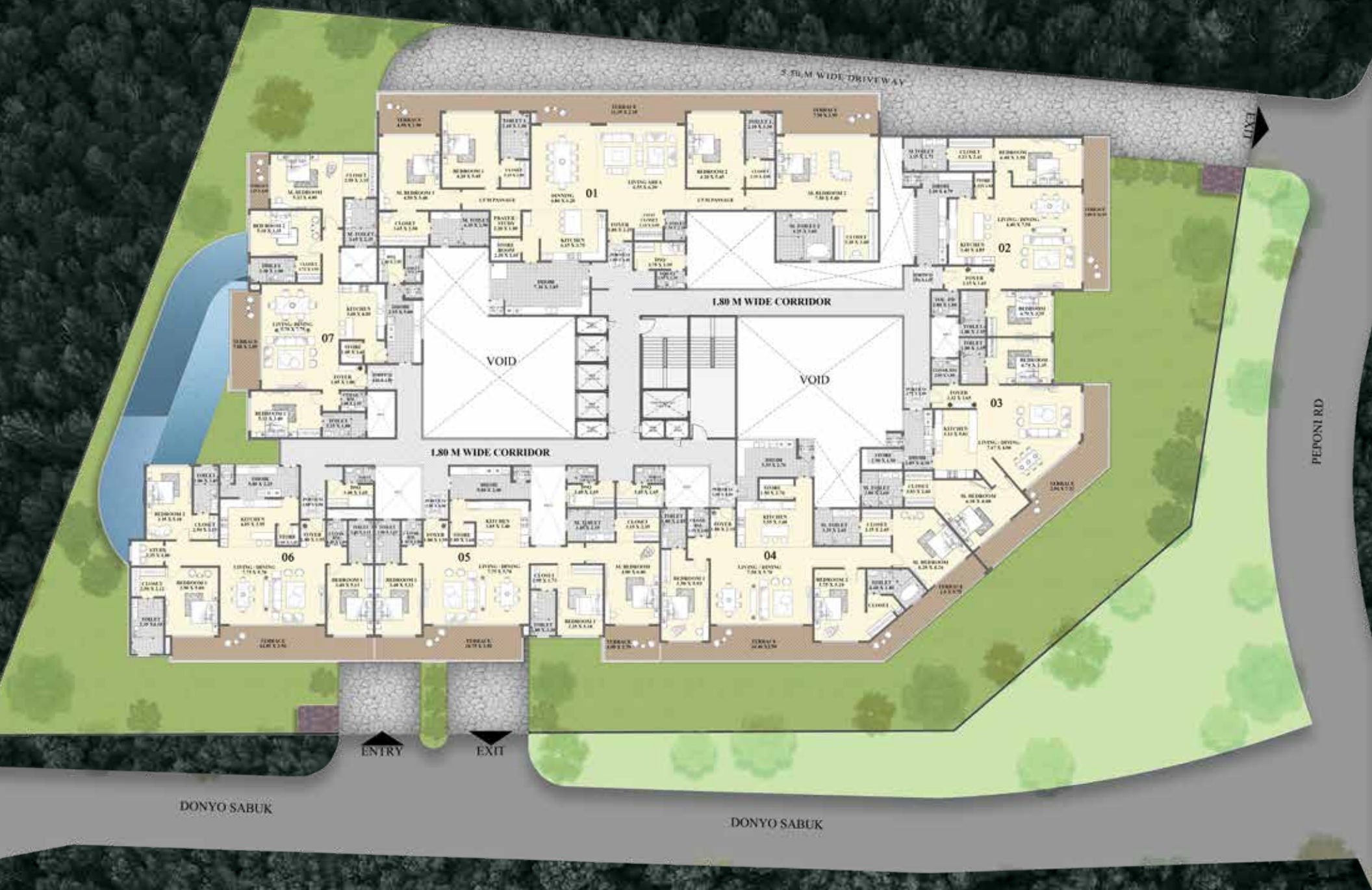


FIND YOUR BALANCE AND LIVE TO THE FULLEST

Experience the ultimate recreation with an extensive range of amenities, designed to cater to every aspect of your lifestyle. Let the kids enjoy the thrill of trampoline and playground, or challenge yourself to a game of lawn checkers. Cozy café for a quick bite or socializing. Stay active on the jogging and walking track, or unwind in the heated pool. Rejuvenate your body and mind in a fully equipped gym and steam room. Host memorable gatherings in the entertainment hall and take in the breathtaking city and forest views from fully landscaped open terrace.



MASTER PLAN



TERRACE PLAN



UNIT NO. 02 - 2 BEDROOM
(GROSS AREA 227.85 SQM)



UNIT NO. 03 - 2 BEDROOM
(GROSS AREA 235.53 SQM)



UNIT NO. 04 - 3 BEDROOM
(GROSS AREA 335.21 SQM)



UNIT NO. 05 - 3 BEDROOM
(GROSS AREA 293.06 SQM)

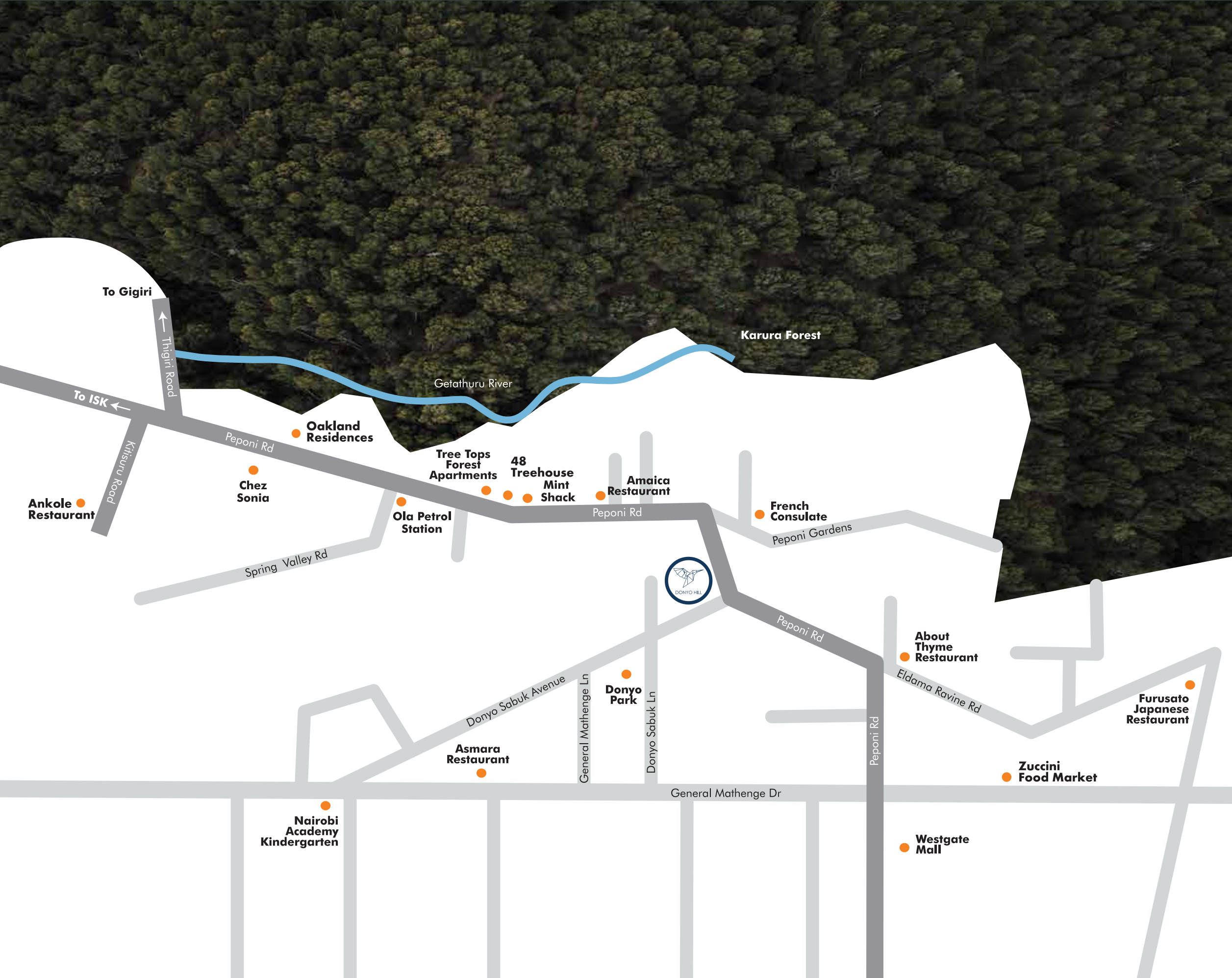


UNIT NO. 06 - 3 BEDROOM
(GROSS AREA 292.36 SQM)



UNIT NO. 07 - 3 BEDROOM
(GROSS AREA 274.54 SQM)





WHERE COMMUNITY MEETS CONVENIENCE

Enjoy the perfect balance of urban convenience and peaceful living at Donyo Hill. Located in the heart of Westlands, you're just moments away from Nairobi's premier dining and shopping destinations, yet nestled in a serene and quiet oasis that provides a tranquil escape from the city's hustle and bustle.

The unique advantage of having easy access to amenities while still enjoying a peaceful living environment.





TRANSFORMING THE URBAN LANDSCAPE

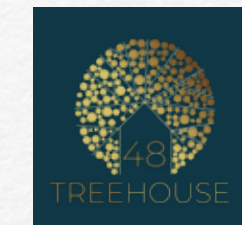


Elegant Properties is focused on high end developments in East Africa with an emphasis on high quality finishes and green building initiatives. Tenants include the UN, notable multinational corporates and large embassies.

Winner of best project in Africa from the International Property Awards, the largest property award accreditor in the world.

Voted as a Superbrand

RECENT DEVELOPMENTS



A Development By



ELEGANT
PROPERTIES

Tel.: +254 731 286 286 / 700 004 449 | info@elegantproperties.co.ke | www.elegantproperties.co.ke

Disclaimer: The information contained in this brochure is an artist's concept. The developer reserves the right to make changes or alterations at their sole discretion. This does not constitute an offer and / or contract of any type. Every effort has been made to ensure the accuracy of information in this brochure.

