

Where luxury & nature
co-exist in perfect

HARMONY





Artist's Impression



LAVISH RESIDENCES

Imagine waking up to the chirping of birds, surrounded by lush greenery and the tranquillity of nature.

Forestview Residences, located on Eldama Ravine Road, and directly facing Karura Forest, offers a unique opportunity to live in serenity. The luxurious 2 and 3 bedroom apartments blend seamlessly into the surrounding natural beauty, and make you feel transported to a new world.

The spaces are built with equal elements of grandeur and thoughtfulness; they are designed to maximize natural ventilation, and offer spacious balconies from which you can watch vibrant Westlands, or the forest beyond.





MAJESTIC WELCOME

Enter a world of refined opulence in the expansive entrance lobby, boasting sleek lines, rich textures, and an abundance of natural light. The perfect fusion of style, sophistication, and warmth, where soaring ceilings, polished marble, and warm tones evoke a sense of refined luxury.



SERENE SANCTUARY

Bring the outdoors in. The spacious living rooms boast floor-to-ceiling windows and stunning views of Karura Forest. The ultimate retreat for nature lovers and those seeking serenity.



TRANQUIL HAVEN

Retreat to your serene oasis, where plush carpets, soft
linens, and stunning forest views lull you into a restful
slumber. Wake up to breathtaking sunrises and start
your day feeling refreshed and renewed.



 GOURMET
GETAWAY

Escape to a world of culinary bliss, featuring premium appliances, sleek surfaces, ample storage, and beautiful finishes. Perfect for foodies & entertainers.



SKY-HIGH
LIVING

Experience the epitome of luxury living at the meticulously designed rooftop oasis, presenting multiple avenues for active sports, recreation & leisure. It features a stunning, heated swimming pool, expansive deck, fully equipped gym with steam rooms for ladies and gents, jogging track, lawn games, kids play area, events hall & lush lawn – ready for immediate indulgence. Enjoy unobstructed views of Karura Forest and make every moment feel like a vacation.



Artist's Impression

KARURA
FOREST

MASTER PLAN



KARURA
FOREST

TERRACE PLAN



Features



Lavish bedrooms featuring large closet spaces & bathrooms



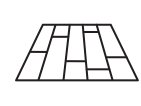
Very large balconies



Large floor to ceiling heights & large windows



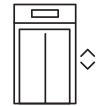
Designer Italian kitchens with In-built appliances



Premium German sanitary fittings



Grand entrance lobby with around the clock security



3 panoramic passenger elevators, 1 service elevator



Adequate & dedicated parking with ample visitor car parking



Well-lit central atriums with skylights



Automatic generator back up for all areas



CCTV & electric fence



Borehole on site



Video Intercom

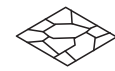


Internet & fiber optic backbone

Kitchen Features



Individually designed layouts made in Italy



Quartz stone work surfaces



Full height splashback



Specialised studio ceiling lighting



Integrated Appliances including Ceramic Hob, Gas Hob, Hood, Multifunctional Oven, & Microwave



Built-in multi-function dishwasher



Spacious pantry attached to the kitchen

Bathroom Features



Spanish porcelain wall and floor tiles



Low-level vanity unit for storage



High-level fixed mirror with concealed LED lighting



Frameless toughened glass shower screen



Recessed LED downlights



Basin with matt black basin mixer



WC pan, soft-close seat, concealed cistern with dual flush



Rain shower head with separate hand shower



GROSS AREA:
192.78 SQ.M
UNIT 01

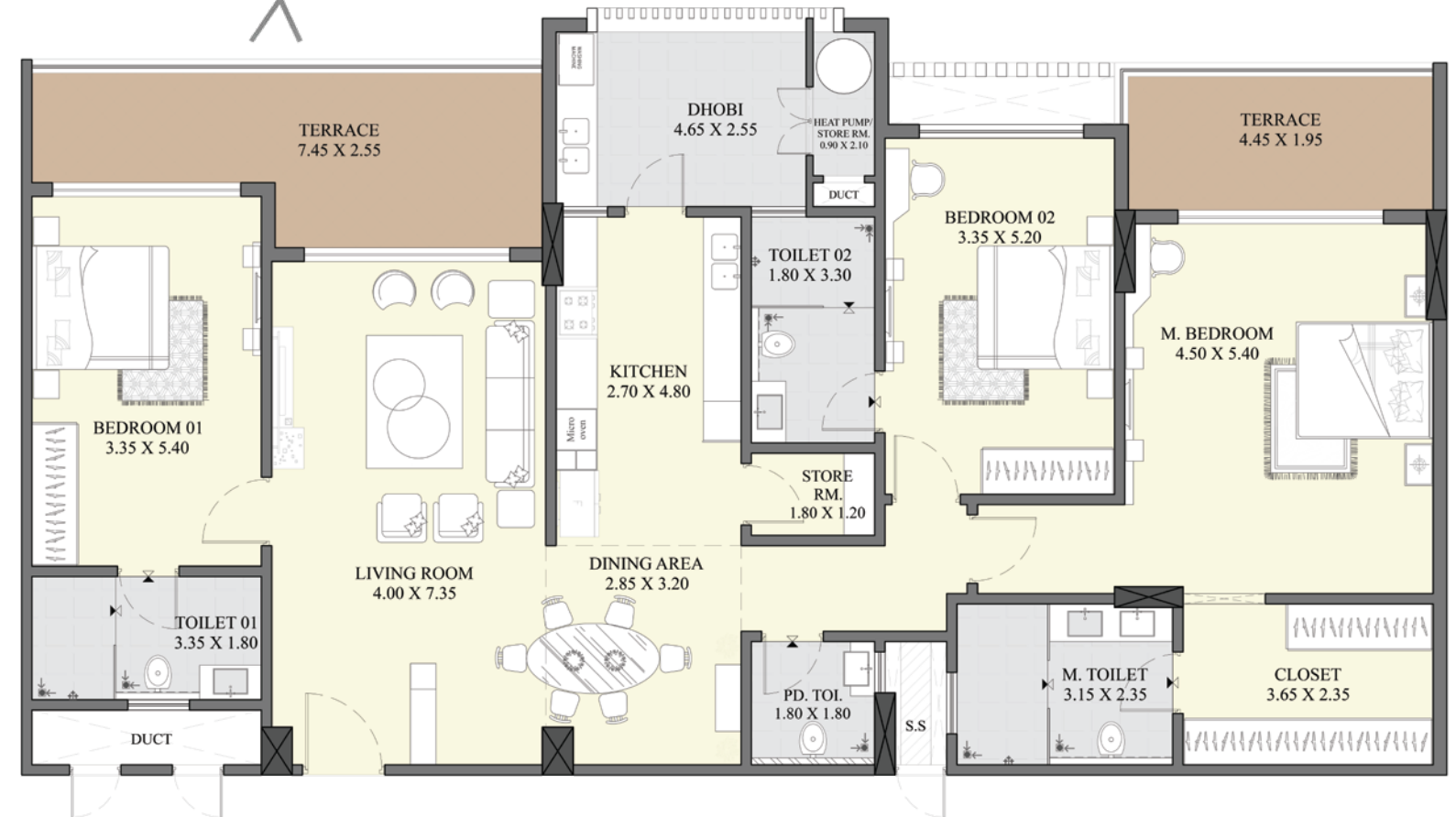




GROSS AREA:
194.89 SQ.M
UNIT 02



GROSS AREA:
243.72 SQ.M
UNIT 03

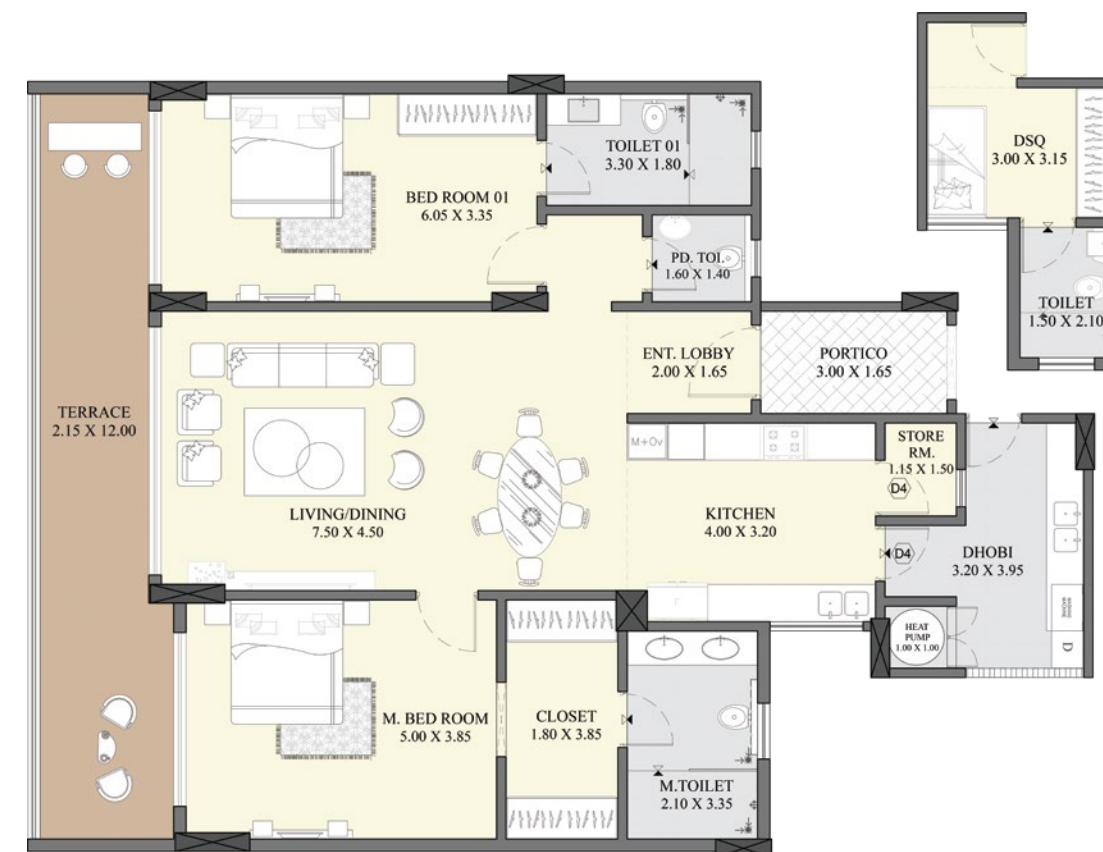




GROSS AREA:
339.77 SQ.M
UNIT 04



GROSS AREA:
215.75 SQ.M
UNIT 05

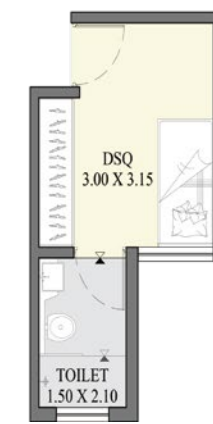
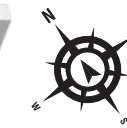




GROSS AREA:
337.84 SQ.M
UNIT 06



GROSS AREA:
269.83 SQ.M
UNIT 07





PRIME LOCATION

Recognised as one of Nairobi's most elite neighbourhoods, Westlands plays host to unparalleled access to top-tier amenities, attractions, and services. Forestview Residences is at one of the city's most well-connected locations with great infrastructure and a constantly evolving skyline.





Artist's Impression



ELEGANT
PROPERTIES

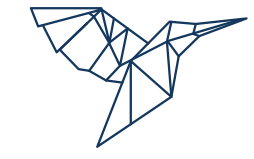
**SHAPING
CITYSCAPES**

Elegant Properties is focused on high end developments in East Africa with an emphasis on high quality finishes and green building initiatives. Tenants include the UN, notable multinational corporates and large embassies.

Winner of best project in Africa from the International Property Awards, the largest property award accreditor in the world.

Voted as a Superbrand

OTHER DEVELOPMENTS



DONYO HILL



A Development By



ELEGANT
PROPERTIES

Tel.: +254 731 286 286 / 700 004 449

E-mail: info@elegantproperties.co.ke | Website: www.elegantproperties.co.ke

Disclaimer: The information contained in this brochure is an artist's concept. The developer reserves the right to make changes or alterations at their sole discretion. This does not constitute an offer and / or contract of any type. Every effort has been made to ensure the accuracy of information in this brochure.